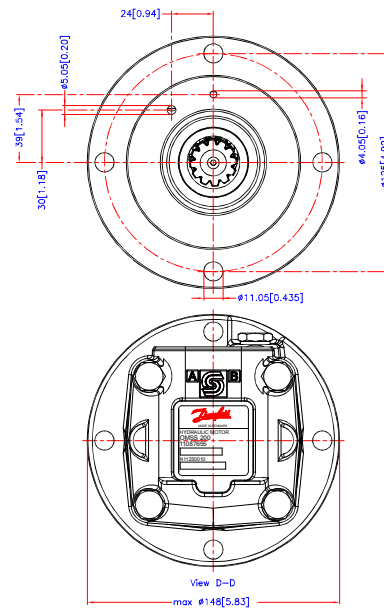
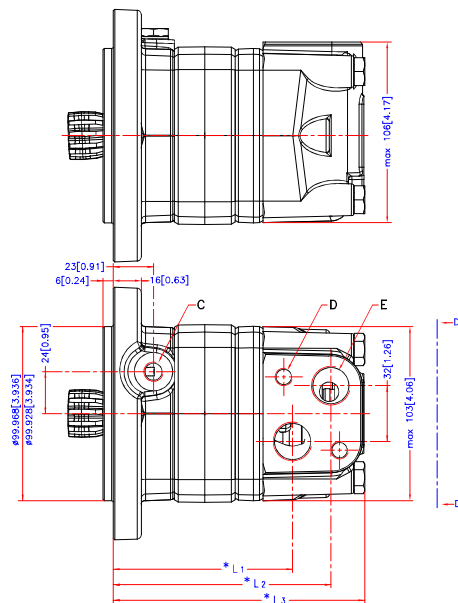


Reset

Download 3D Model



Code Number	CCM	* L 1 mm./inch.	* L 2 mm./inch.	* L 3max mm./inch.
151F0535	80	82.0[3.23]	104.0[4.09]	max. 126.0[4.96]
151F0536	100	85.4[3.36]	107.4[4.23]	max. 129.4[5.09]
151F0537	125	89.8[3.54]	111.8[4.40]	max. 133.8[5.27]
151F0538	160	95.8[3.77]	117.8[4.64]	max. 139.8[5.50]
151F0539	200	102.8[4.05]	124.8[4.91]	max. 146.8[5.78]
151F0540	250	111.5[4.39]	133.5[5.26]	max. 155.5[6.12]
151F0541	315	122.8[4.83]	144.8[5.70]	max. 166.8[6.57]
151F0608	400	136.4[5.37]	158.4[6.24]	max. 180.4[7.10]

C: Drain connection
G 1/4; 12[0.47] deep
D: M10; 13[0.51] deep
E: G 1/2; 16[0.63] deep



Tolerance for basic dimensions = ±1 mm (0.04 inch)

Alt.	Reason	Date	Scale	Projection	Design	Appr.	OMSS
-	-	-	1:1	1	ASJ		-
<p>Date 2013.11.14</p> <p>Design ASJ Appr.</p> <p>Confidential: Property of Danfoss (Vendborg) A/S, Denmark. Not to be handled over its, copied or used by third party. Any of these documents reproduction of contents to be authorized by Danfoss (Vendborg) A/S. Danfoss (Vendborg) A/S reserves the right to alter products already on order or provided that such alterations can be made without substantial changes being necessary to specifications already agreed.</p>							No. 8_151D0650

