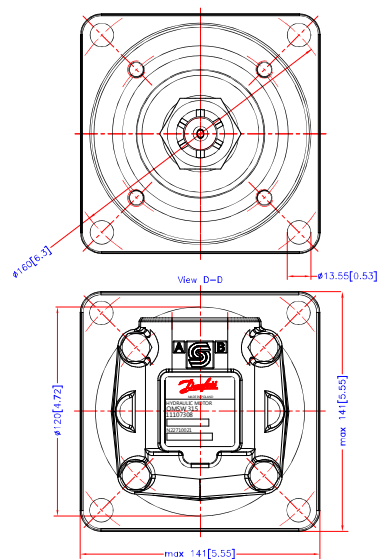



[Download 3D Model](#)

A diagram showing a central circle with four smaller circles arranged around it. Arrows indicate flow directions: one arrow points up from the top circle, one points down to the bottom circle, one points left to the left circle, and one points right to the right circle. The entire structure is enclosed in a dashed blue square.

Altered	Reason	Date	Scale	Projection
--	--	--	1:1	
			Date	2014.12.08
			Design	MP Approb.
Confidential: Property of Danmarks (Dansk) A/S, Denmark. By third party, Two or three dimensional reproduction of content Danmarks (Dansk) A/S can accept no responsibility for possible Danmarks (Dansk) A/S reserves the right to alter products at any time without notice.				

Confidential: Property of Danfoss (Nordborg) A/S, Denmark. Not to be handed over to, copied or used by third party. Two- or three dimensional reproduction of contents to be authorized by Danfoss (Nordborg) A/S. Danfoss (Nordborg) A/S can accept no responsibility for possible errors in drawings. Danfoss (Nordborg) A/S reserves the right to alter products already on order or provided that such alterations can be made without consequential changes being necessary in specifications already agreed.

Danfoss

OMSW

ø35 tapered

No. 8_151D0591