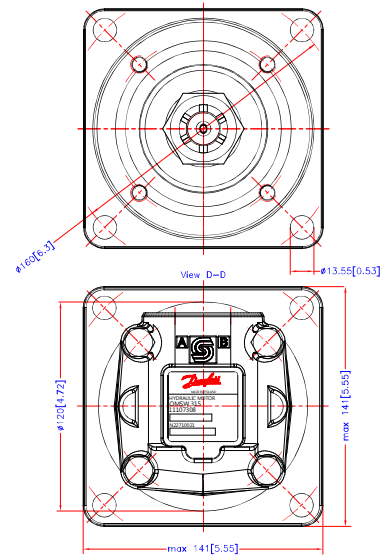
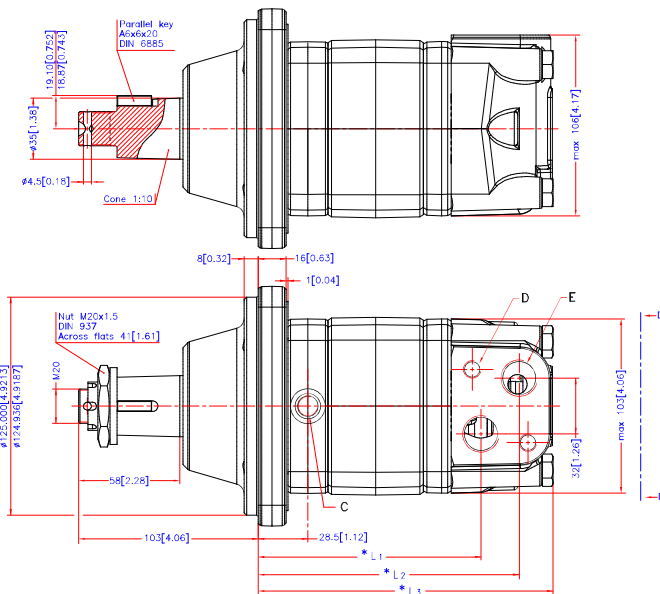


Reset



Code Number	CCM	* L 1 mm/inch	* L 2 mm/inch	* L 3 max mm/inch
151F0528	80	87.0 [3.43]	109.0 [4.29]	max. 131.3 [5.17]
151F0529	100	90.4 [3.56]	112.4 [4.43]	max. 134.7 [5.30]
151F0530	125	94.8 [3.73]	116.8 [4.60]	max. 139.1 [5.48]
151F0531	160	100.8 [3.97]	122.8 [4.83]	max. 145.1 [5.71]
151F0532	200	107.8 [4.24]	129.8 [5.11]	max. 152.1 [5.99]
151F0533	250	116.5 [4.59]	138.5 [5.45]	max. 160.8 [6.33]
151F0534	315	127.8 [5.03]	149.8 [5.90]	max. 172.1 [6.78]
151F0609	400	141.4 [5.57]	163.4 [6.43]	max. 185.7 [7.31]

C: Drain connection
G 1/4; 12 [0.47] deep
D: M10; 13 [0.51] deep
E: G 1/2; 16 [0.63] deep



Tolerance for basic dimensions = ±1 mm (0.04 inch)

Material	Reason	Date	Scale	Projection	Design	Approv.	Comments	OMSW
			1:1		MP		Confidential: Property of Danfoss (Shanghai) A/S, Denmark. Not to be handled over to, copied or used by third party. Any of these dimensional specifications or contents to be supplied by Danfoss (Shanghai) A/S, Denmark (hereafter) A/S, shall always be interpreted as provided herein or changed. Danfoss (hereafter) A/S reserves the right to alter products already on order or provided that such alterations can be made without subsequent changes being necessary to specifications already agreed.	ø35 tapered
								No. 8_151D0591

