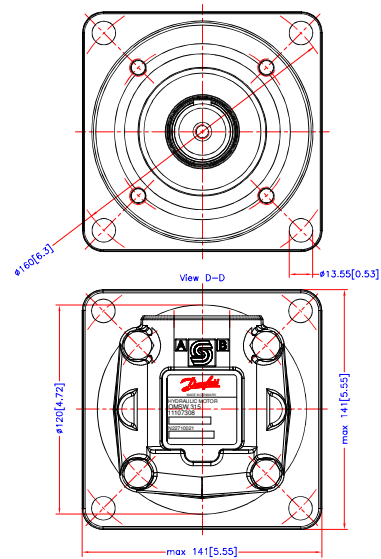
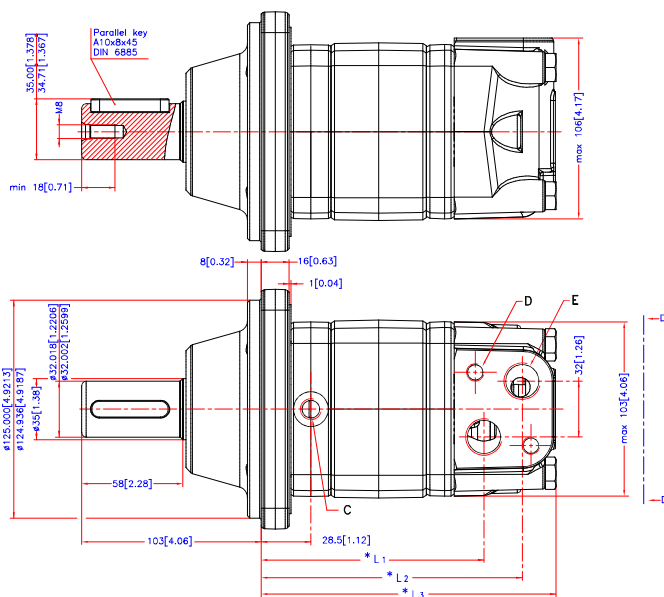
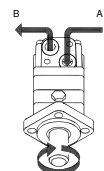


[Reset](#)
[Download 3D Model](#)


Code Number	CCM	* L 1 mm./inch.	* L 2 mm./inch.	* L 3max mm./inch.
151F0521	80	87.0[3.43]	109.0[4.29]	max. 131.3[5.17]
151F0522	100	90.4[3.56]	112.4[4.43]	max. 134.7[5.30]
151F0523	125	94.8[3.73]	116.8[4.60]	max. 139.1[5.48]
151F0524	160	100.8[3.97]	122.8[4.83]	max. 145.1[5.71]
151F0525	200	107.8[4.24]	129.8[5.11]	max. 152.1[5.99]
151F0526	250	116.5[4.59]	138.5[5.45]	max. 160.8[6.33]
151F0527	315	127.8[5.03]	149.8[5.90]	max. 172.1[6.78]
151F0610	400	141.4[5.57]	163.4[6.43]	max. 185.7[7.31]



C: Drain connection
G 1/4; 12[0.47] deep
D: M10; 13[0.51] deep
E: G 1/2; 16[0.63] deep



Tolerance for basic dimensions = ± 1 mm (0.04 inch)

Alt.	Reason	Date	Scale	Projection	Design	Appr.	Confidential	OMSW
-	-	-	1:1	First Angle	ASJ		Property of Danfoss (Vording) A/S, Denmark. Not to be handed over, copied or used for any other purpose without the written approval of Danfoss (Vording) A/S. Danfoss (Vording) A/S reserves the right to alter products without notice or without prior notice. Danfoss (Vording) A/S reserves the right to alter products without notice or without prior notice. Danfoss (Vording) A/S reserves the right to alter products without notice or without prior notice.	Ø32 cyl.
No.	8_151D0702							