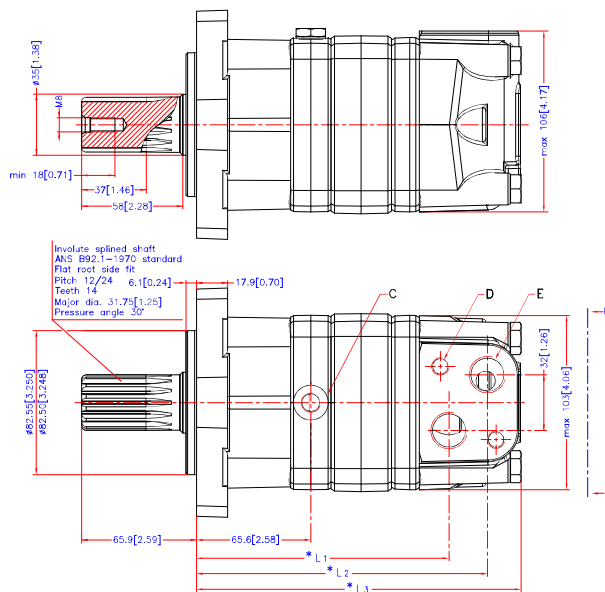
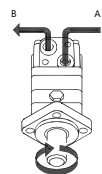
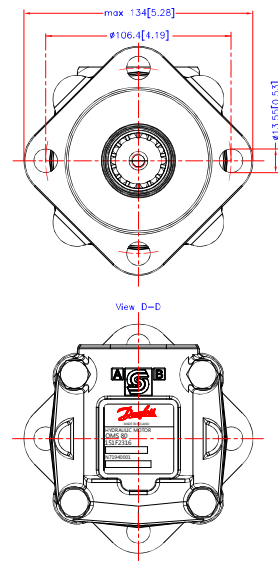


Reset

[Download 3D Model](#)

Code Number	CCM	* L1 mm./inch.	* L2 mm./inch.	* L3 mm mm./inch.
151F0507	80	124.1[4.89]	146.1[5.75]	max. 168.4[6.63]
151F0508	100	127.5[5.02]	145.5[5.89]	max. 171.8[6.76]
151F0509	125	131.9[5.20]	155.9[6.06]	max. 176.2[6.93]
151F0510	160	137.9[5.43]	159.9[6.30]	max. 182.2[7.17]
151F0511	200	144.9[5.70]	166.9[6.57]	max. 189.2[7.45]
151F0631	200	144.9[5.70]	166.9[6.57]	max. 189.2[7.45]
151F0612	250	153.6[6.05]	176.6[6.91]	max. 197.9[7.80]
151F0513	315	164.9[6.49]	186.9[7.36]	max. 209.2[8.24]
151F0567	400	178.5[7.03]	200.5[7.89]	max. 222.8[8.77]




C: Drain connection
G 1/4; 12[0.47] deep

D: M10; 13[0.51] deep

E: G 1/2; 16[0.63] deep



Tolerance for basic dimensions = ± 1 mm (0.04 inch)

Altered	Reason	Date	Scale	Projection		OMS
-	-	-	1:1			14T splined
			Date	2015.01.19		
			Design: MP	Approb:		
<p>Copyright: Property of Danfoss (Denmark) A/S, Denmark. Not to be handled over to, copied or used by third party. No- or three-dimensional reproductions of contents to be authorized by Danfoss (Denmark) A/S. Danfoss (Denmark) A/S accepts no responsibility for possible errors or omissions.</p> <p>TM Danfoss (Denmark) A/S reserves the right to alter product details or order or prohibit that such functions can be fully utilized without a license from Danfoss (Denmark) A/S.</p>						
No.						8_15100672