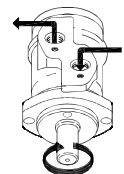
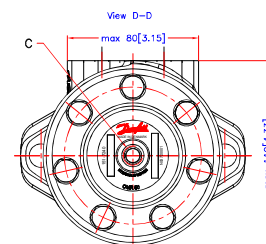
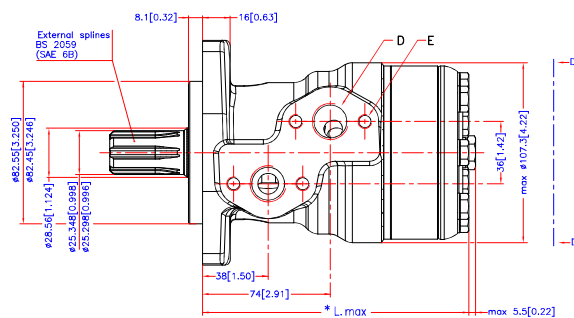
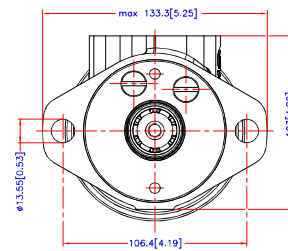
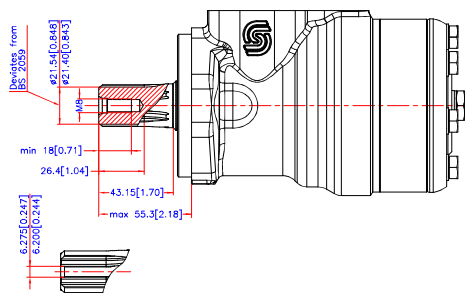


Reset

Download 3D Model





Code Number	CCM	* L_{max} mm./inch.
151-0720	50	max. 137.8[5.43]
151-0721	80	max. 142.8[5.62]
151-0722	100	max. 146.25[5.76]
151-0723	125	max. 150.6[5.93]
151-0724	160	max. 156.6[6.17]
151-0725	200	max. 163.6[6.44]
151-0726	250	max. 172.3[6.78]
151-0727	315	max. 183.6[7.23]
151-0728	375	max. 193.8[7.63]

C: Drain connection
G 1/4; 12[0.47] deep

D: G 1/2; min 15[0.59] deep

E: M8; 13[0.51] deep



Altnerd	Reason	Date	Score	Projection
-	-	-	1:1	 
			Date	2011.12.15
			Design ASJ	Approb.

Confidential: Property of Charles Nordberg A/S. Disclosed by third party. Two- or three-dimensional reproduction of Charles Nordberg A/S can incur no responsibility for part Charles Nordberg A/S reserves the right to alter product drawings, as the people without substantial commercial drawings.

Confidential: Property of Danloss (Norborg) A/S, Denmark. Not to be handed over to, copied or used by third party. Two- or three dimensional reproduction of contents to be authorized by Danloss (Norborg) A/S. Danloss (Norborg) A/S can accept no responsibility for possible errors or drawings. Danloss (Norborg) A/S reserves the right to alter products directly on order or provided that such alterations can be made without subsequent charges being necessary in specifications already agreed.

Tolerance for basic dimensions = ± 1 mm (0.04 inch)

Danford

OMR

Shaft splined $\varnothing 1$ inch

No. 8_151D0364