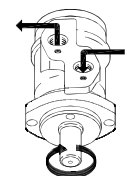
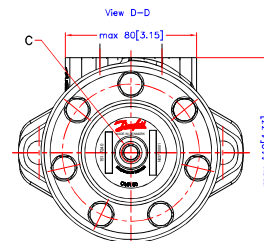
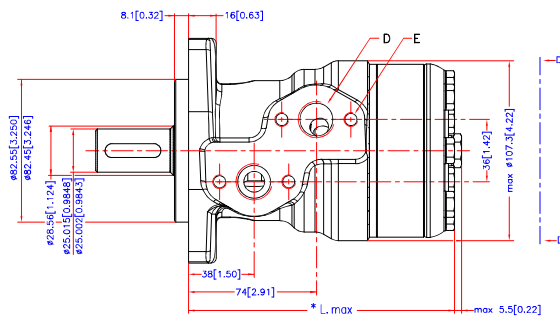
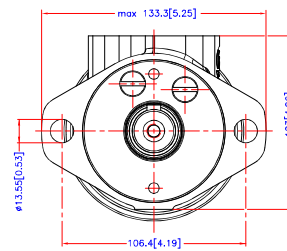
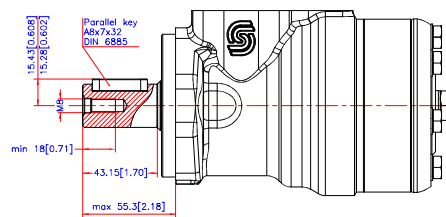


[Reset](#)
[Download 3D Model](#)


Code Number	CCM	* L max mm/inch
151-0710	50	max. 137.8 [5.43]
151-0711	80	max. 142.8 [5.62]
151-0712	100	max. 146.2 [5.76]
151-0713	125	max. 150.6 [5.93]
151-0714	160	max. 156.6 [6.17]
151-0715	200	max. 163.6 [6.44]
151-0716	250	max. 172.3 [6.78]
151-0717	315	max. 183.6 [7.23]
151-0718	375	max. 193.8 [7.63]

C: Drain connection
G 1/4; 12 [0.47] deep
D: G 1/2; min 15 [0.59] deep
E: M8; 13 [0.51] deep



Alt.	Reason	Date	Scale	Projection
1	-	-	1:1	First Angle
2	-	-	1:1	First Angle
3	-	-	1:1	First Angle
4	-	-	1:1	First Angle
5	-	-	1:1	First Angle
6	-	-	1:1	First Angle
7	-	-	1:1	First Angle
8	-	-	1:1	First Angle
9	-	-	1:1	First Angle
10	-	-	1:1	First Angle

Danfoss

OMR
Shaft Ø25 mm.
No. 8_151D0357

Tolerance for basic dimensions = ±1 mm (0.04 inch)

Confidential - Property of Danfoss (Denmark) A/S. Denmark. Not to be traded over 10, copied or used by third party. Two- or three-dimensional reproduction of contents is authorized by Danfoss (Denmark) A/S. Danfoss (Denmark) A/S can accept no responsibility for possible errors or omissions. Danfoss (Denmark) A/S reserves the right to alter products already in order or provided that such alterations can be made without substantial changes being necessary in specifications already agreed.