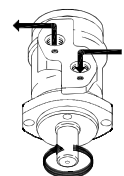
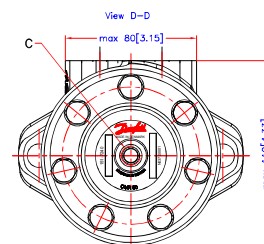
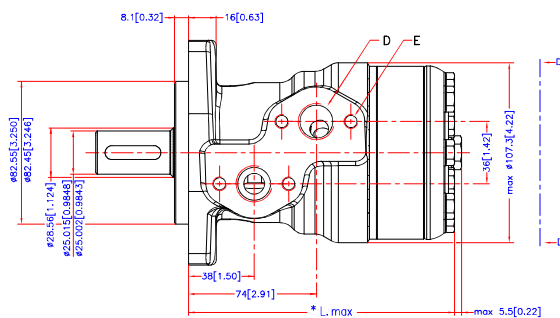
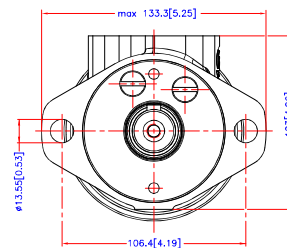
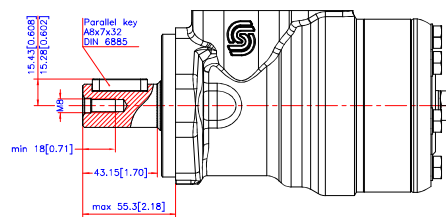



Reset

[Download 3D Model](#)

Code Number	CCM	* L_{max} mm./inch.
151-0710	50	max. 137.8[5.43]
151-0711	80	max. 142.8[5.62]
151-0712	100	max. 146.2[5.76]
151-0713	125	max. 150.6[5.93]
151-0714	160	max. 156.6[6.17]
151-0715	200	max. 163.6[6.44]
151-0716	250	max. 172.3[6.78]
151-0717	315	max. 183.6[7.23]
151-0718	375	max. 193.8[7.63]

- C: Drain connection
G 1/4; 12[0.47] deep
- D: G 1/2; min 15[0.59] deep
- E: M8; 13[0.51] deep



Altitud	Reason	Date	Scale	Projection
—	—	—	1:1	
			Date	2011.12.15
			Design	ASJ
			Approb.	
<p>Considered: Property of Darfines (Nordang) A/S, Denmark by third party. Two or three dimensional reproduction of Darfines (Nordang) A/S can accept no responsibility for Darfines (Nordang) A/S reserves the right to alter products</p>				

Confidential: Property of Danfoss (Norborg) A/S, Denmark. Not to be handed over to, copied or used by third party. Two- or three dimensional reproduction of contents to be authorized by Danfoss (Norborg) A/S. Danfoss (Norborg) A/S can accept no responsibility for possible errors or drawings. Danfoss (Norborg) A/S reserves the right to alter products directly on order or provided that such alterations can be made without substantial changes being necessary in specifications already agreed.

Tolerance for basic dimensions = ± 1 mm (0.04 inch)

Danford

OMR

No. 8_151D0357