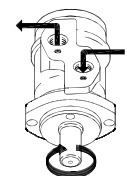
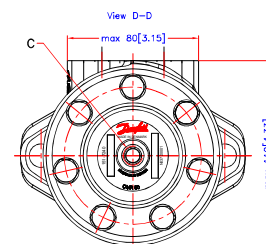
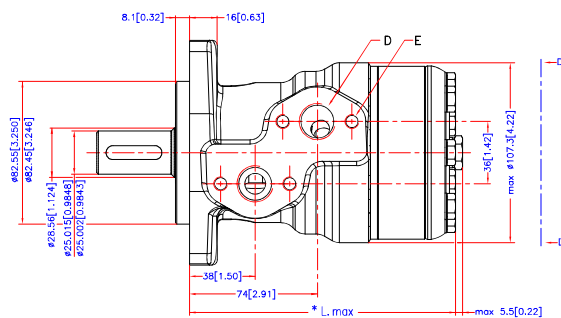
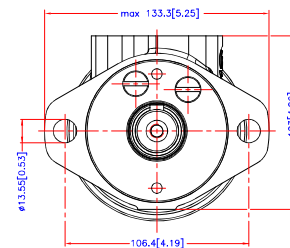
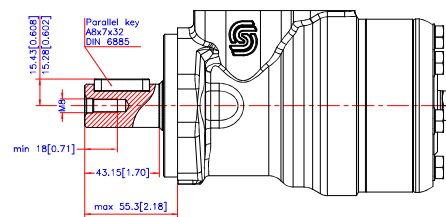


Reset

[Download 3D Model](#)


Code Number	CCM	* L _{max} mm./inch.
151-0710	50	max. 137.8[5.43]
151-0711	80	max. 142.8[5.62]
151-0712	100	max. 146.2[5.76]
151-0713	125	max. 150.6[5.93]
151-0714	160	max. 156.6[6.17]
151-0715	200	max. 163.6[6.44]
151-0716	250	max. 172.3[6.78]
151-0717	315	max. 183.6[7.23]
151-0718	375	max. 193.8[7.63]

C: Drain connection
G 1/4; 12[0.47] deep

D: G 1/2; min 15[0.59] deep

E: M8; 13[0.51] deep



Altmed	Reason	Date	Scale	Projection		OMR
-	-	-	1:1			Shaft Ø25 mm.
			Date	2011.12.15		
			Design ASJ	Approb:		
<p> Certificate: Property of Danfoss (Denmark) A/S, Denmark. Not to be handed over to, copied or used by third party. Inc- or free dimensional drawings of contents is authorized by Danfoss (Denmark) A/S. Danfoss (Denmark) A/S can accept no responsibility for possible errors or omissions. Danfoss (Denmark) A/S reserves the right to alter products directly or indirectly without notice. This document can be made without a formal drawing license agreement in accordance with Danish law. </p>						
No.						8_15100357

Tolerance for basic dimensions = ± 1 mm (0.04 inch)