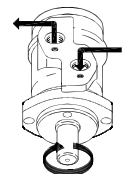
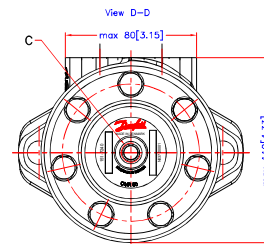
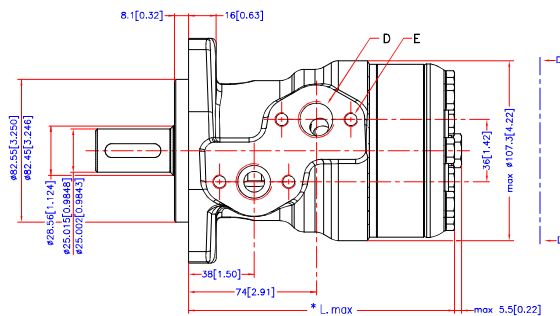
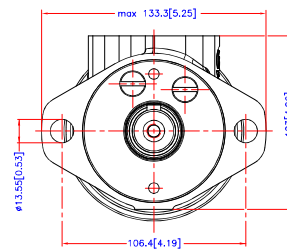
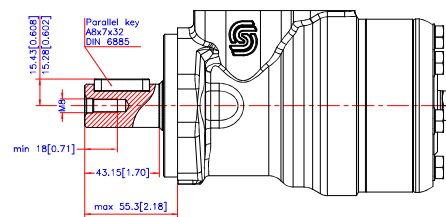


Reset

[Download 3D Model](#)



Code Number	CCM	* L _{max} mm./inch.
151-0710	50	max. 137.8[5.43]
151-0711	80	max. 148.3[5.82]
151-0712	100	max. 146.2[5.76]
151-0713	125	max. 150.6[5.93]
151-0714	160	max. 156.6[6.17]
151-0715	200	max. 163.6[6.44]
151-0716	250	max. 172.3[6.78]
151-0717	315	max. 183.6[7.23]
151-0718	375	max. 193.8[7.63]

C: Drain connection
G 1/4; 12[0.47] deep

D: G 1/2; min 15[0.59] deep

E: M8; 13[0.51] deep



Altnerd	Reason	Date	Score	Projection
-	-	-	1:1	 
			Date	2011.12.15
			Design ASJ	Approb.

Confidential: Property of Darvas (Norburg) A/S. Document by third party, two- or three-dimensional reproduction of Darvas (Norburg) A/S can incur no responsibility for parts. Darvas (Norburg) A/S reserves the right to alter product drawings, can be made without responsibility drawings but

Confidential! Property of Danfoss (Nordborg) A/S, Denmark. Not to be handed over to, copied or used by third party. Two- or three dimensional reproduction of contents to be authorized by Danfoss (Nordborg) A/S. Danfoss (Nordborg) A/S can accept no responsibility for possible errors or drawings. Danfoss (Nordborg) A/S reserves the right to alter products already on order or provided that such alterations can be made without consequential changes being necessary in specifications already agreed.

Tolerance for basic dimensions = ± 1 mm (0.04 inch)

Danfoss

OMR

No.	8_151D0357
-----	------------