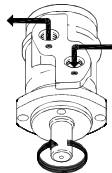
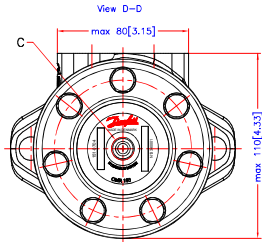
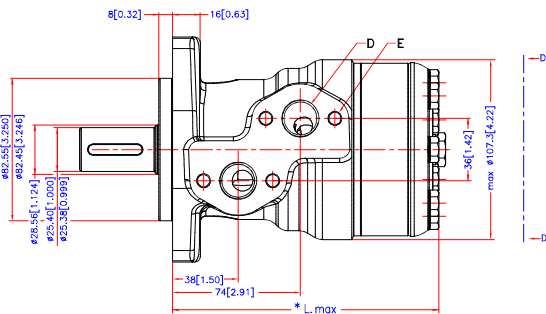
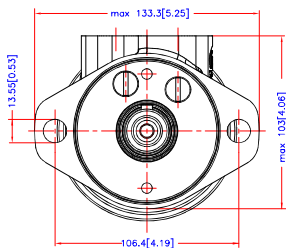
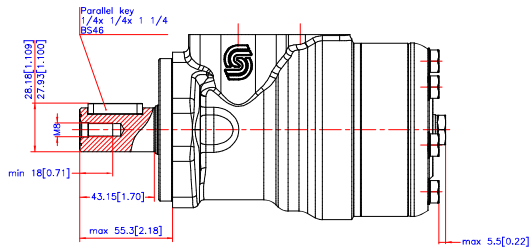


Reset



Code Number	CCM	* L max mm/inch
151-0700	50	max. 137.8 [5.43]
151-0701	80	max. 142.8 [5.62]
151-0702	100	max. 146.2 [5.76]
151-0703	125	max. 150.6 [5.93]
151-0704	160	max. 156.6 [6.17]
151-0705	200	max. 163.6 [6.44]
151-0706	250	max. 172.3 [6.78]
151-0707	315	max. 183.6 [7.23]
151-0708	375	max. 193.8 [7.63]

C: Drain connection
G 1/4; 12 [0.47] deep
D: G 1/2; min 15 [0.59] deep
E: M8; 13 [0.51] deep



Tolerance for basic dimensions = ±1 mm (0.04 inch)

Alt	Reason	Date	Scale	Projection
—	—	—	1:1	—
—	—	—	—	—
—	—	—	—	—
—	—	—	—	—
—	—	—	—	—
—	—	—	—	—
—	—	—	—	—
—	—	—	—	—
—	—	—	—	—

Danfoss

OMR
Shaft Ø1 inch
No. 8_151D0384