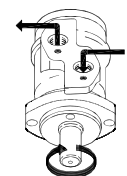
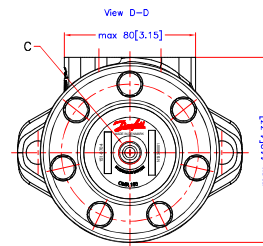
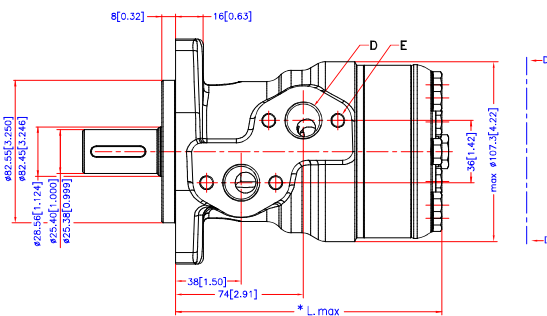
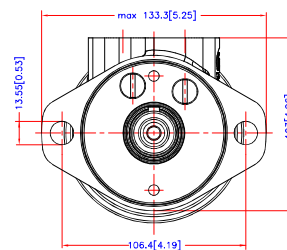
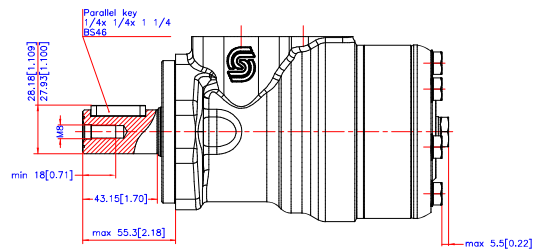


Reset

Download 3D Model



Code Number	CCM	* L.max mm/inch.
151-0700	50	max. 137.8 [5.43]
151-0701	80	max. 142.8 [5.62]
151-0702	100	max. 146.2 [5.76]
151-0703	125	max. 150.6 [5.93]
151-0704	160	max. 156.6 [6.17]
151-0705	200	max. 163.6 [6.44]
151-0706	250	max. 172.3 [6.78]
151-0707	315	max. 183.6 [7.23]
151-0708	375	max. 193.8 [7.63]

C: Drain connection  
G 1/4; 12 [0.47] deep  
D: G 1/2; min 15 [0.59] deep  
E: M8; 13 [0.51] deep



Alt	Reason	Date	Scale	Projection
1			1:1	
2				
3				
4				
5				
6				
7				
8				
9				
10				
11				
12				
13				
14				
15				
16				
17				
18				
19				
20				
21				
22				
23				
24				
25				
26				
27				
28				
29				
30				
31				
32				
33				
34				
35				
36				
37				
38				
39				
40				
41				
42				
43				
44				
45				
46				
47				
48				
49				
50				
51				
52				
53				
54				
55				
56				
57				
58				
59				
60				
61				
62				
63				
64				
65				
66				
67				
68				
69				
70				
71				
72				
73				
74				
75				
76				
77				
78				
79				
80				
81				
82				
83				
84				
85				
86				
87				
88				
89				
90				
91				
92				
93				
94				
95				
96				
97				
98				
99				
100				

**Danfoss**

Confidential. Property of Danfoss (Denmark) A/S. Denmark. Not to be traded over 10, copied or used by third party. No "as is" or "with all faults" reproduction of contents is authorized by Danfoss (Denmark) A/S. Danfoss (Denmark) A/S can accept no responsibility for possible errors or omissions. Danfoss (Denmark) A/S reserves the right to alter products directly on order or provided that such alterations can be made without substantial changes being necessary in specifications already agreed.

OMR
Shaft Ø1 inch
No. 8_151D0384