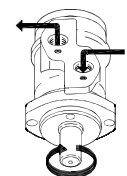
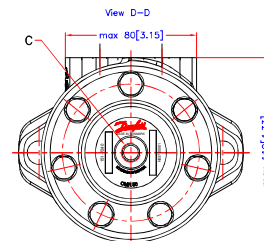
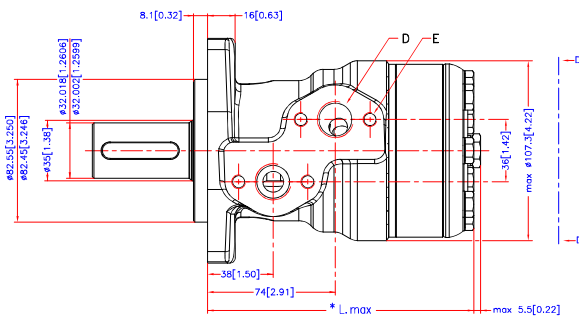
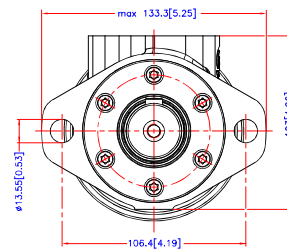
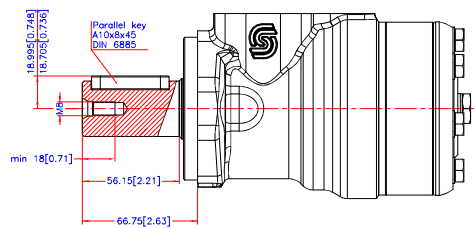


[Reset](#)
[Download 3D Model](#)


Code Number	CCM	* L _{max} mm/inch
151-0248	50	max. 137.8 [5.43]
151-0242	80	max. 142.8 [5.62]
151-0243	100	max. 146.2 [5.76]
151-0208	125	max. 150.6 [5.93]
151-0244	160	max. 156.6 [6.17]
151-0245	200	max. 163.6 [6.44]
151-0247	250	max. 172.3 [6.78]
151-0246	315	max. 183.6 [7.23]
151-6294	375	max. 193.8 [7.63]

C: Drain connection
G 1/4; 12 [0.47] deep
D: G 1/2; min 15 [0.59] deep
E: M8; 13 [0.51] deep



Alt	Reason	Date	Scale	Projection
-	-	-	1:1	1st angle
-	-	-	-	-
-	-	-	-	-
-	-	-	-	-
-	-	-	-	-
-	-	-	-	-
-	-	-	-	-
-	-	-	-	-
-	-	-	-	-
-	-	-	-	-

Danfoss

OMR
Shaft Ø32 mm.
No. 8_151D0316

Tolerance for basic dimensions = ±1 mm (0.04 inch)