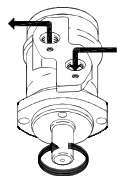
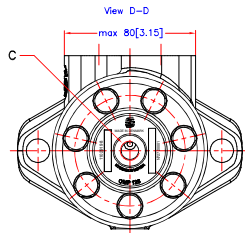
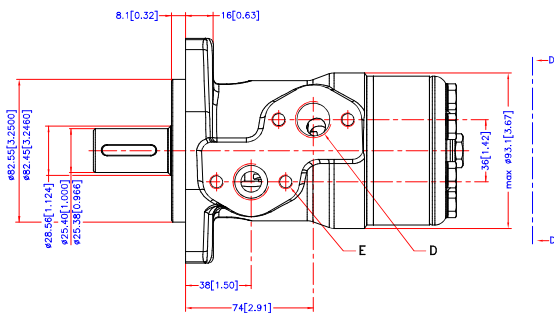
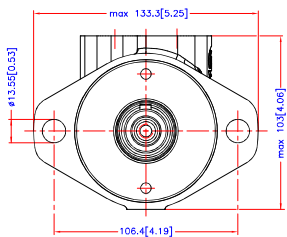
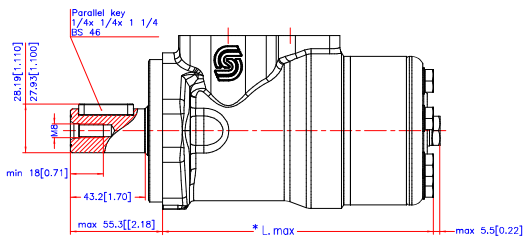


Reset



Code Number	CDM	* L <sub>max</sub> mm./inch.
151-0600	50	max. 133.2[5.24]
151-0601	80	max. 137.2[5.40]
151-0602	100	max. 139.7[5.50]
151-0603	125	max. 143.5[5.65]
151-0604	160	max. 147.5[5.81]
151-0605	200	max. 152.7[6.01]
151-0606	250	max. 159.2[6.27]
151-0607	315	max. 167.6[6.60]
151-0608	400	max. 178.7[7.04]

C: Drain connection  
G1/4; 12[0.47] deep  
D: G1/2; min 15[0.59] deep  
E: M8; 13[0.51] deep



Alt.	Reason	Date	Scale	Projection
-	-	-	1:1	1st Angle
-	-	-	-	-
-	-	-	-	-
-	-	-	-	-
-	-	-	-	-
-	-	-	-	-
-	-	-	-	-
-	-	-	-	-
-	-	-	-	-
-	-	-	-	-

**Danfoss**

OMP
Shaft Ø1 inch
No. 8_151D0235

Tolerance for basic dimensions = ±1 mm (0.04 inch)

Confidential. Property of Danfoss (Denmark) A/S. Denmark. Not to be traded over 1% capital or used by third party. Two- or three dimensional reproduction of contents is authorized by Danfoss (Denmark) A/S. Danfoss (Denmark) A/S can accept no responsibility for possible errors or omissions. Danfoss (Denmark) A/S reserves the right to alter products already in order or provided that such alterations can be made without substantial changes being necessary in specifications already agreed.