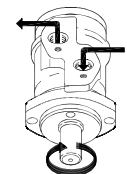
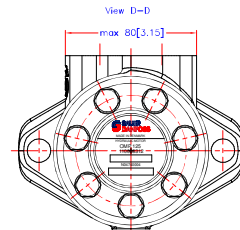
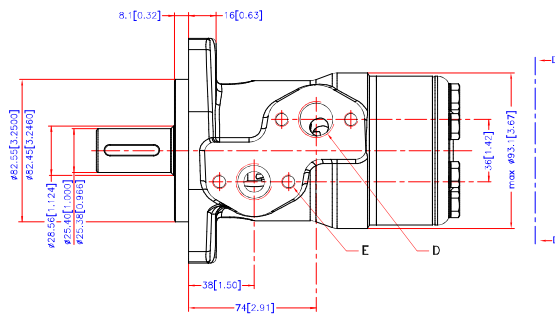
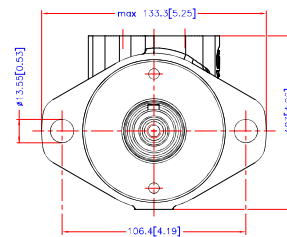
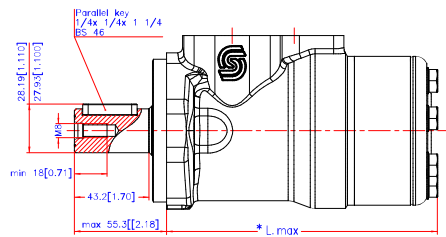


Reset



Code Number	CCM	* L max mm/inch
11090903	40	max. 133.2[5.24]
151-0300	50	max. 133.2[5.24]
151-0301	80	max. 137.2[5.40]
151-0302	100	max. 139.7[5.50]
151-0303	125	max. 143.5[5.65]
151-0304	160	max. 147.5[5.81]
151-0305	200	max. 152.7[6.01]
151-0306	250	max. 159.2[6.27]
151-0307	315	max. 167.6[6.60]
151-0308	400	max. 178.7[7.04]

D: 01/2; min 15[0.59] deep

E: M8; 13[0.51] deep



Revised	Reason	Date	Scale	Projection
-	-	-	1:1	First Angle
Date: 2013.02.05 Drawn: M.P. Appr:				



OMP
Shaft Ø1 inch
No. 8_151D0233

Tolerance for basic dimensions = ±1 mm (0.04 inch)

Copyright: Property of Sauer-Danfoss (Holding) A/S. Drawings that is not handed over to, copied or used by third party. Two- or three dimensional reproduction of contents to be authorized by Sauer-Danfoss (Holding) A/S. Sauer-Danfoss (Holding) A/S can accept no responsibility for possible errors on drawings. Sauer-Danfoss (Holding) A/S reserves the right to alter products already on order or produced that such alterations can be made without subsequent changes being necessary in specifications already agreed.